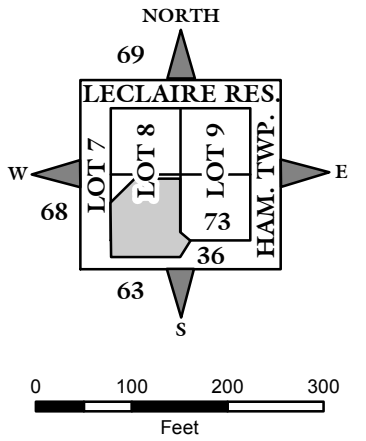




NOTE: STARTING IN 2002, PARCEL NUMBERS WILL NOT REFLECT THE TOWNSHIP ABBREVIATIONS, BUT THE 2-DIGIT TOWNSHIP NUMBER.



GIS DEPARTMENT
ROCK ISLAND COUNTY,
ILLINOIS

(A)
TROY SUBD. TO THE CITY OF E.M. - FILED AUG. 6, 1922, IN PLAT BOOK 15, PAGE 22. 074923

(B)
TOWN OF E.M., PLAT OF BLOCKS 157, 158, AND 159. - FILED OCT. 8, 1895, IN PLAT BOOK 6, PAGE 13 - 31. 074069 - 4111

(B)
TOWN OF E.M., PLAT OF BLOCKS 168, 169, AND 170. - FILED OCT. 8, 1895, IN PLAT BOOK 6, PAGE 13 - 31. 074319 - 4404

(B)
TOWN OF EAST MOLINE - PLAT OF BLOCKS 178, 179, AND 180. 074552 - 4632
PLAT OF BLOCKS 189, 190, AND 191. 074797 - 4867

(E)
ROSS'S 1ST ADD. TO E.M. - FILED JAN. 10, 1927, IN PLAT BOOK 19, PAGE 22. 073840 - 3854

(F)
PLEASANT VIEW 3RD ADD. TO E.M. - FILED JULY 19, 1920, IN PLAT BOOK 14, PAGE 66. 073676 - 3701

(G)
RIVER VIEW ADD. TO E.M. BEING A SUBDIVISION OF PART OF LOTS 8 AND 9, LECLAIRE'S RESERVE AND PART OF SEC. 36-18-1W. OF 4TH P.M. - FILED SEPT. 21, 1909, IN PLAT BOOK 11, PAGE 24. 073838 - 3839

SUPERVISORS' ASSESSMENT
MAP OF
PART OF LOT 8,
LECLAIRE'S RESERVE,
T.18N., R.1W., OF 4TH P.M.
SOUTH MOLINE TOWNSHIP
SUPPLEMENTAL FOR 2018
THIS IS NOT A LEGAL DOCUMENT