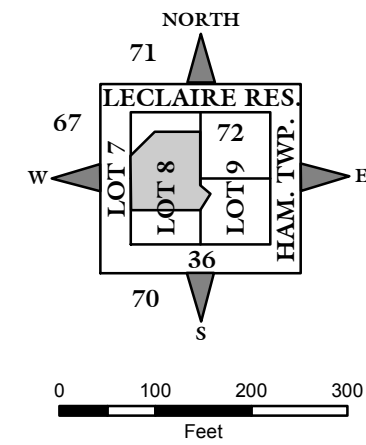




NOTE: STARTING IN 2002, PARCEL NUMBERS WILL NOT REFLECT THE TOWNSHIP ABBREVIATIONS, BUT THE 2-DIGIT TOWNSHIP NUMBER.



GIS DEPARTMENT
ROCK ISLAND COUNTY,
ILLINOIS

- (A) PALMER & HARTZELL'S 1ST ADD. TO EAST MOLINE - FILED APR. 12, 1911, IN PLAT BOOK 11, PAGE 51. 073409 - 3436
- (B) COTTAGE GROVE ADD. TO EAST MOLINE - FILED SEPT. 7, 1912, IN PLAT BOOK 11, PAGE 72. 072943 - 2996
- (C) PALMER & ALBRECHT'S 1ST ADD. TO EAST MOLINE - FILED MAY 16, 1914, IN PLAT BOOK 12, PAGE 68. 073381 - 3408
- (D) TOWN OF EAST MOLINE IN PLAT BOOK 6, PAGE 13 - 33.
- (E) QUARTER ADD. - FILED AUG. 24, 2001, DOC. # 2001-23980. 0714751 - 14757

SUPERVISORS' ASSESSMENT
MAP OF
PART OF LOTS 8 & 9
LECLAIRE RESERVE,
T.18N., R.1W., OF 4TH P.M.
SOUTH MOLINE TOWNSHIP
SUPPLEMENTAL FOR 2017
THIS IS NOT A LEGAL DOCUMENT