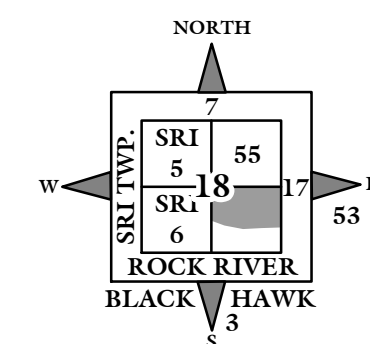
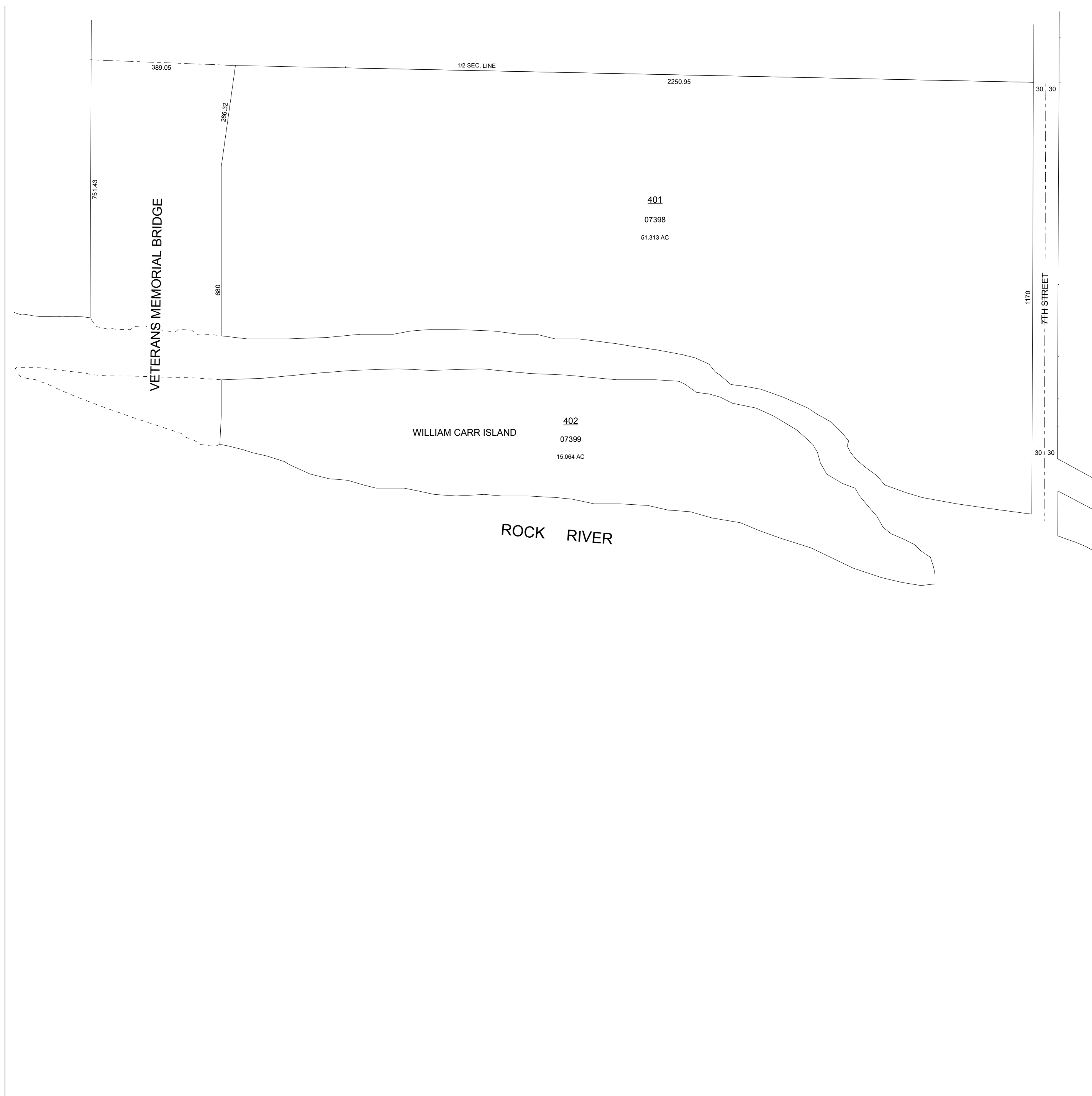


NOTE: STARTING IN 2002, PARCEL NUMBERS WILL NOT REFLECT THE TOWNSHIP ABBREVIATIONS, BUT THE 2-DIGIT TOWNSHIP NUMBER.



0 100 200 300
Feet

GIS DEPARTMENT
ROCK ISLAND COUNTY,
ILLINOIS



SUPERVISORS' ASSESSMENT
MAP OF
SE FRL. 1/4 SECTION 18
T. 17 N., R. 1 W., 4TH P.M.
SOUTH MOLINE TOWNSHIP
SUPPLEMENTAL FOR 2018
17-18-400
THIS IS NOT A LEGAL DOCUMENT