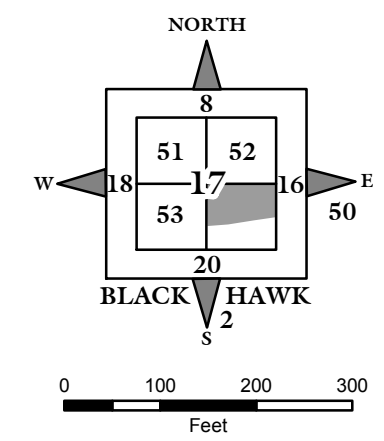


NOTE: STARTING IN 2002, PARCEL NUMBERS WILL NOT REFLECT THE TOWNSHIP ABBREVIATIONS, BUT THE 2-DIGIT TOWNSHIP NUMBER.

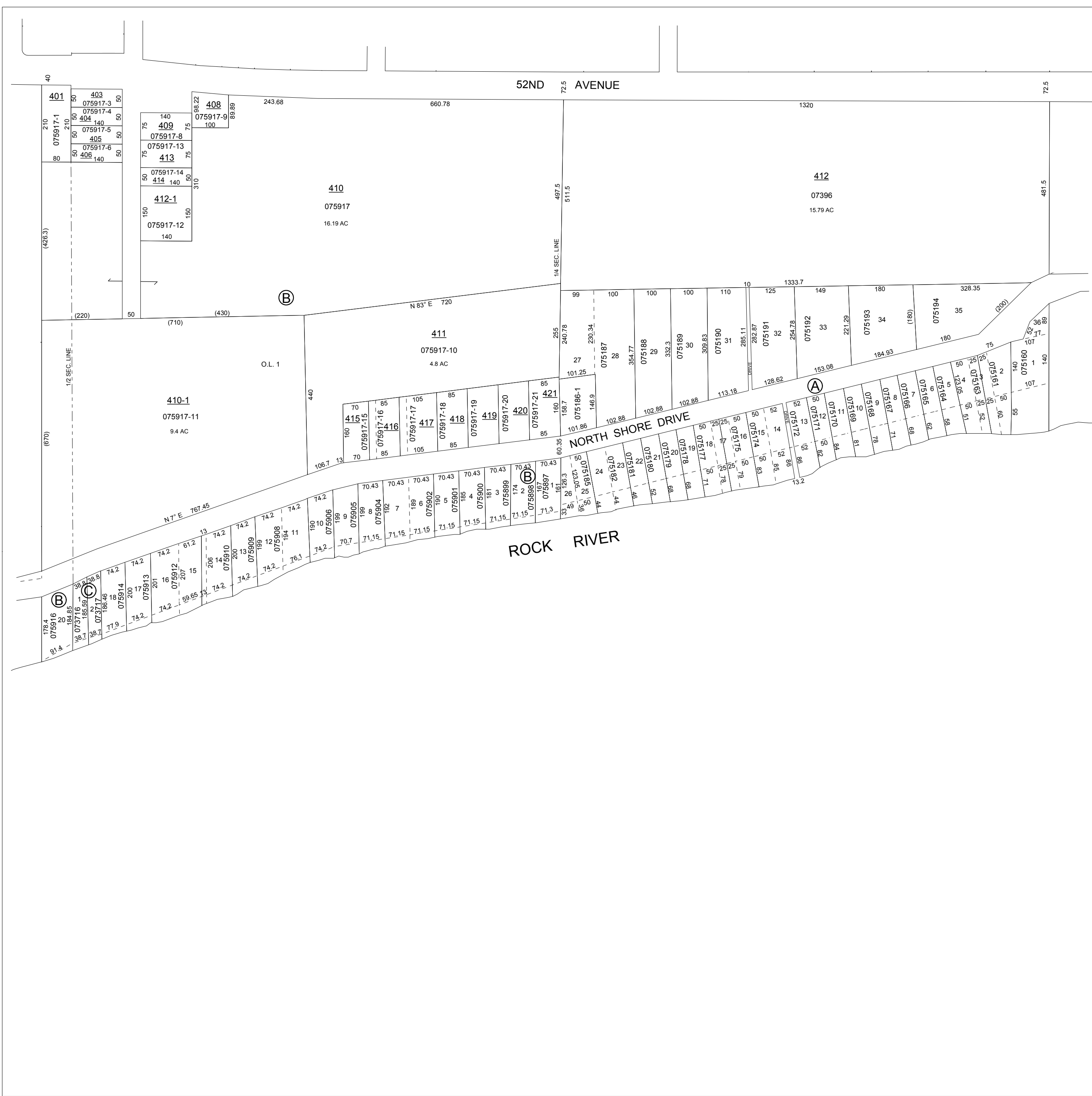


GIS DEPARTMENT
ROCK ISLAND COUNTY,
ILLINOIS

(A)
NORTH SHORE ADDITION
FILED 8/8/1939, IN PLAT BOOK 22,
PAGE 52. 075160 - 5195

(B)
NORTH SHORE 2ND ADDITION
FILED 11/27/1946, IN PLAT BOOK 27,
PAGE 169. 075897 - 5917-12

(C)
DUNN 1ST ADDITION
FILED 1/18/1982, IN PLAT BOOK 46,
PAGE 39. 0713716 - 13717



SUPERVISORS' ASSESSMENT
MAP OF
SE FRL 1/4 SECTION 17
T. 17 N., R. 1 W., 4TH P.M.
SOUTH MOLINE TOWNSHIP
SUPPLEMENTAL FOR 2018
17-17-400
THIS IS NOT A LEGAL DOCUMENT