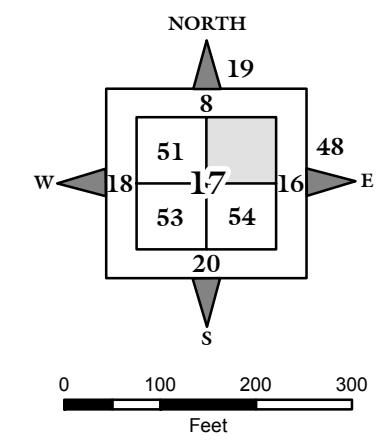
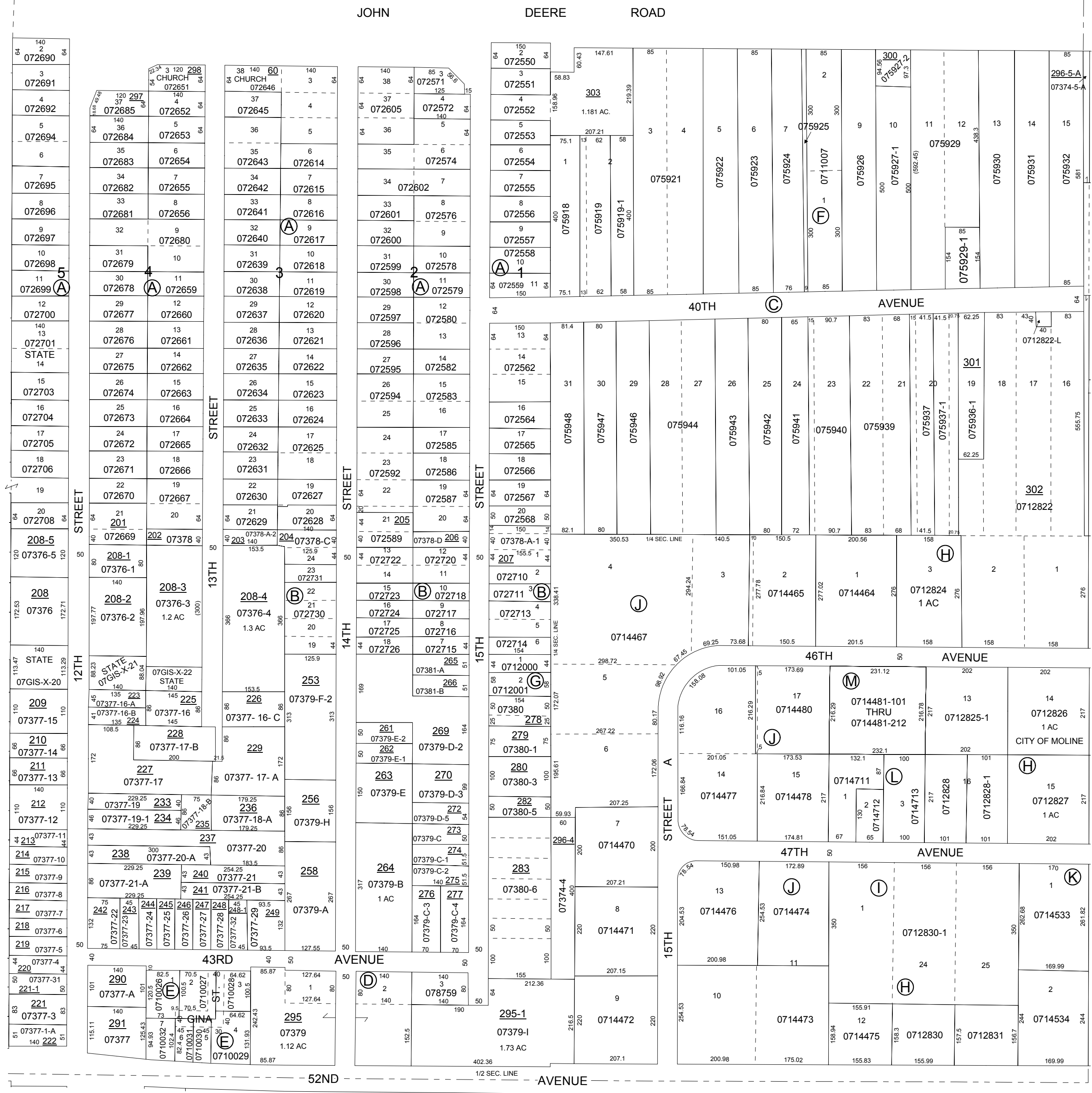


NOTE: STARTING IN 2002, PARCEL NUMBERS WILL NOT REFLECT THE TOWNSHIP ABBREVIATIONS, BUT THE 2-DIGIT TOWNSHIP NUMBER.



GIS DEPARTMENT  
ROCK ISLAND COUNTY,  
ILLINOIS

FOR SUBDIVISION  
INFORMATION SEE  
SHEET 52-S



SUPERVISORS' ASSESSMENT  
MAP OF  
NE 1/4 SECTION 17  
T. 17 N., R. 1 W., 4TH P.M.  
SOUTH MOLINE TOWNSHIP  
SUPPLEMENTAL FOR 2012  
17-17-200  
THIS IS NOT A LEGAL DOCUMENT