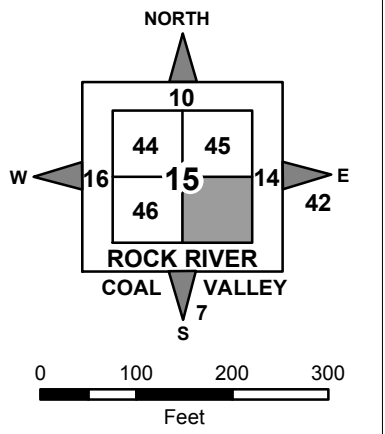
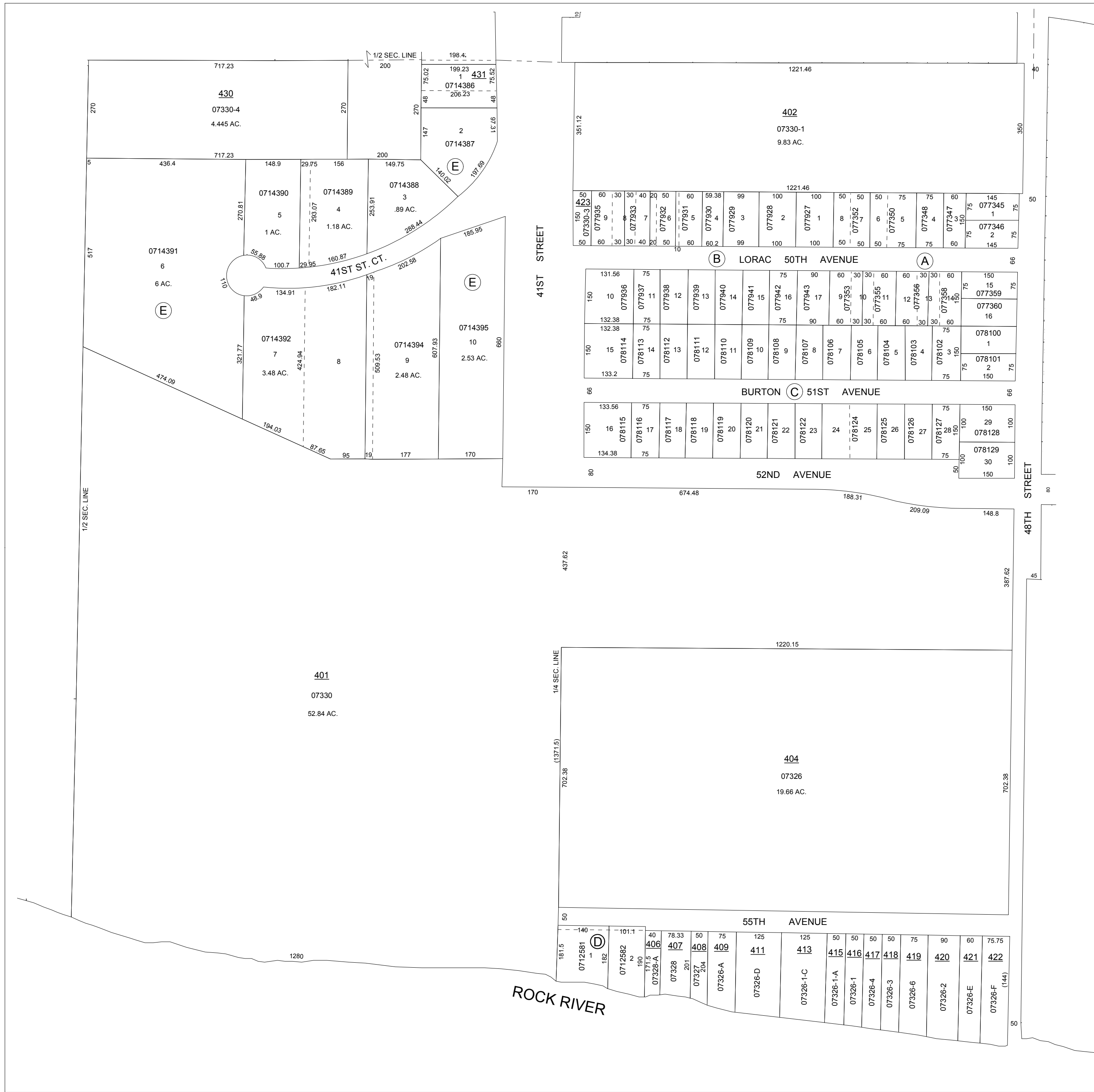


NOTE: STARTING IN 2002, PARCEL NUMBERS WILL NOT REFLECT THE TOWNSHIP ABBREVIATIONS, BUT THE 2-DIGIT TOWNSHIP NUMBER.



GIS DEPARTMENT  
ROCK ISLAND COUNTY,  
ILLINOIS

- (A) COBB'S SUBD. FILED 2/14/1952, IN PLAT BOOK 29, PAGE 57. 077345 - 7360
- (B) COBB'S 2ND SUBD. FILED 7/15/1954, IN PLAT BOOK 29, PAGE 300. 077927 - 7943
- (C) COBB'S THIRD SUBD. FILED 4/18/1955, IN PLAT BOOK 29, PAGE 375. 078100 - 8129
- (D) RODELL'S ROCK RIVER LOTS FILED 4/17/1972, IN PLAT BOOK 43, PAGE 300. 0712581 - 12582
- (E) ROCK RIVER INDUSTRIAL PARK FILED 3/28/1994, IN PLAT BOOK 46, PAGE 387. 0714386 - 14395



SUPERVISORS' ASSESSMENT  
MAP OF  
S.E. 1/4 SEC. 15,  
T. 17 N., R. 1 W., 4TH P.M.  
SOUTH MOLINE TOWNSHIP  
SUPPLEMENTAL FOR 2018  
17-15-400  
THIS IS NOT A LEGAL DOCUMENT