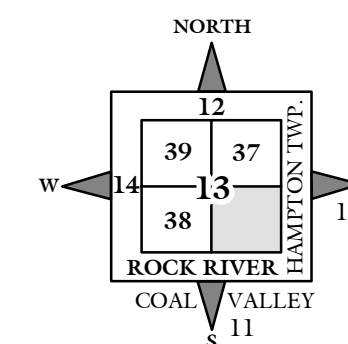
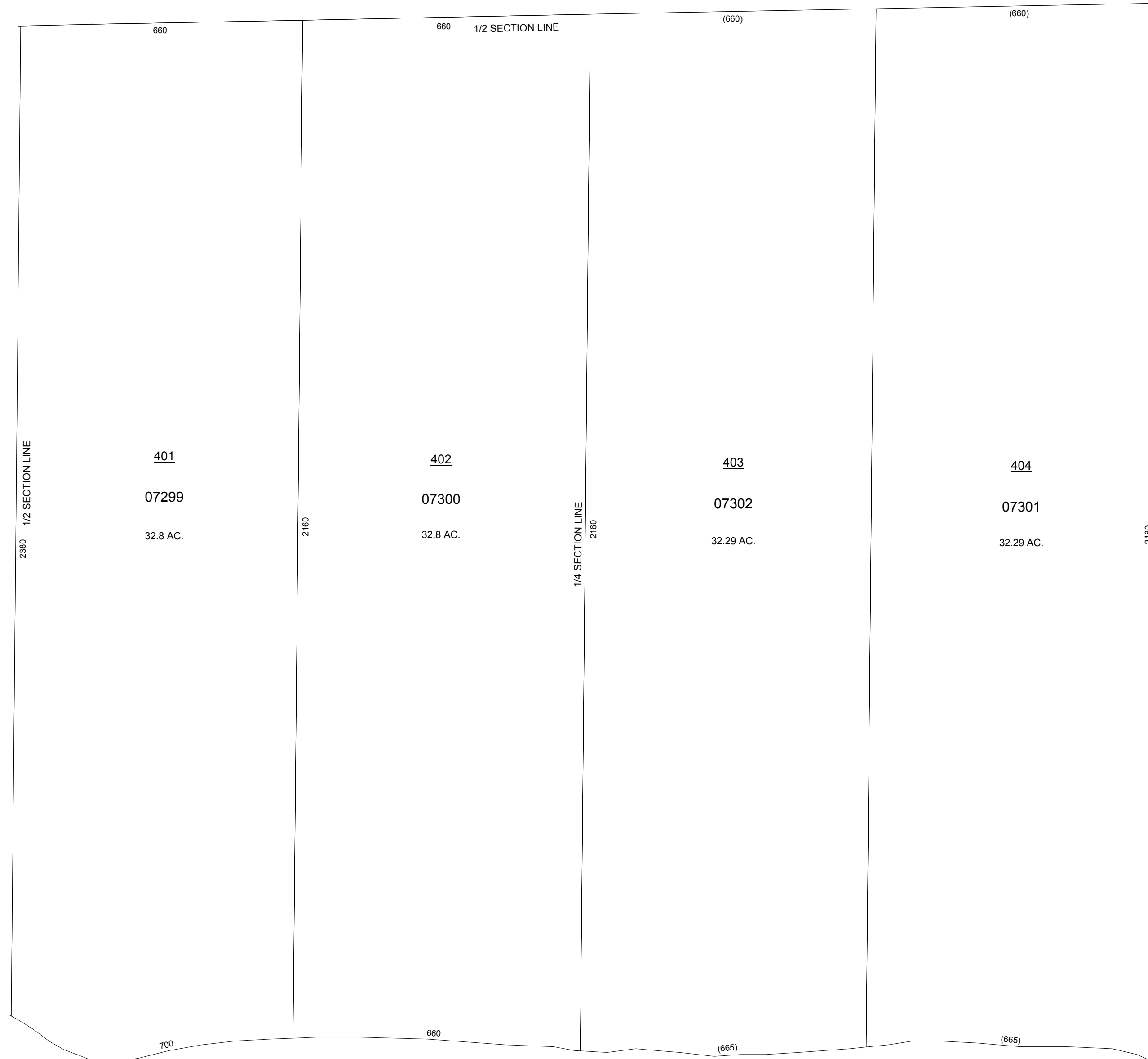


NOTE: STARTING IN 2002, PARCEL NUMBERS WILL NOT REFLECT THE TOWNSHIP ABBREVIATIONS, BUT THE 2-DIGIT TOWNSHIP NUMBER.



GIS DEPARTMENT
ROCK ISLAND COUNTY,
ILLINOIS



ROCK RIVER

SUPERVISORS' ASSESSMENT
MAP OF
S.E. 1/4 FRL. SEC. 13,
T. 17N., R. 1W., OF THE 4TH P.M.
SOUTH MOLINE TOWNSHIP
SUPPLEMENTAL FOR 2008
17-13-400
THIS IS NOT A LEGAL DOCUMENT