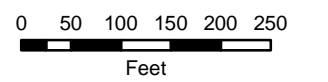
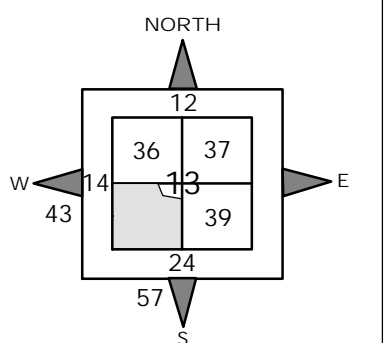
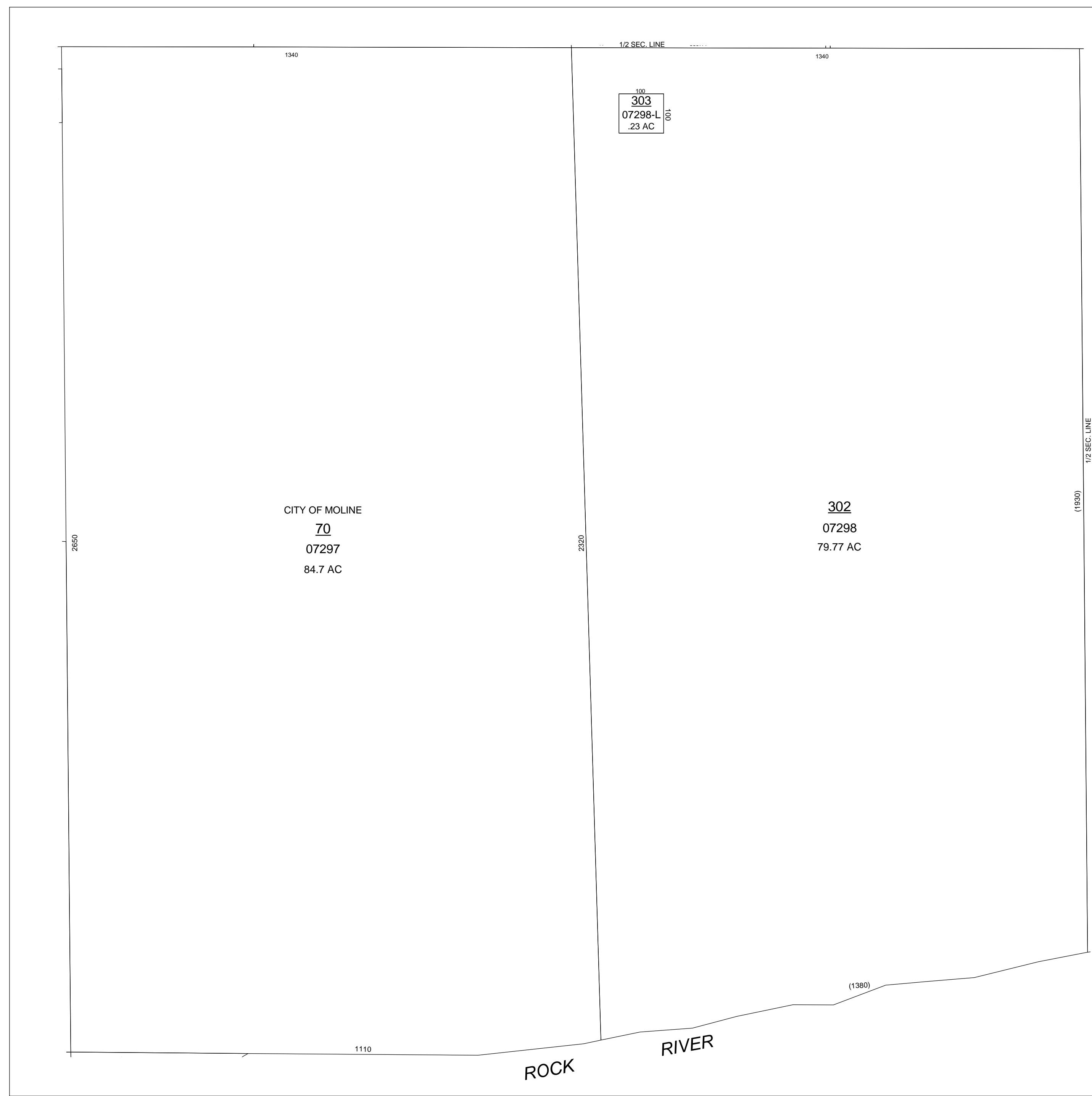


NOTE: STARTING IN 2002, PARCEL NUMBERS WILL NOT REFLECT THE TOWNSHIP ABBREVIATIONS, BUT THE 2-DIGIT TOWNSHIP NUMBER.



GIS DEPARTMENT
ROCK ISLAND COUNTY,
ILLINOIS



SUPERVISORS' ASSESSMENT
MAP OF
SW 1/4 FRL. SEC. 13, T. 17N, R 1W,
OF THE 4TH P.M.
SOUTH MOLINE TOWNSHIP
SUPPLEMENTAL FOR 2002
17-13-300-