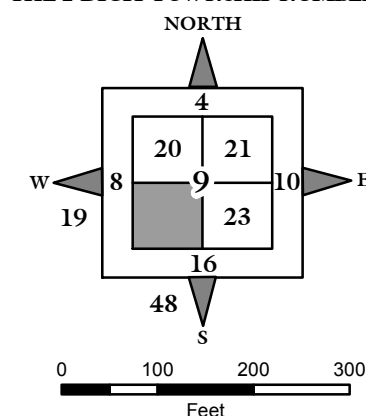
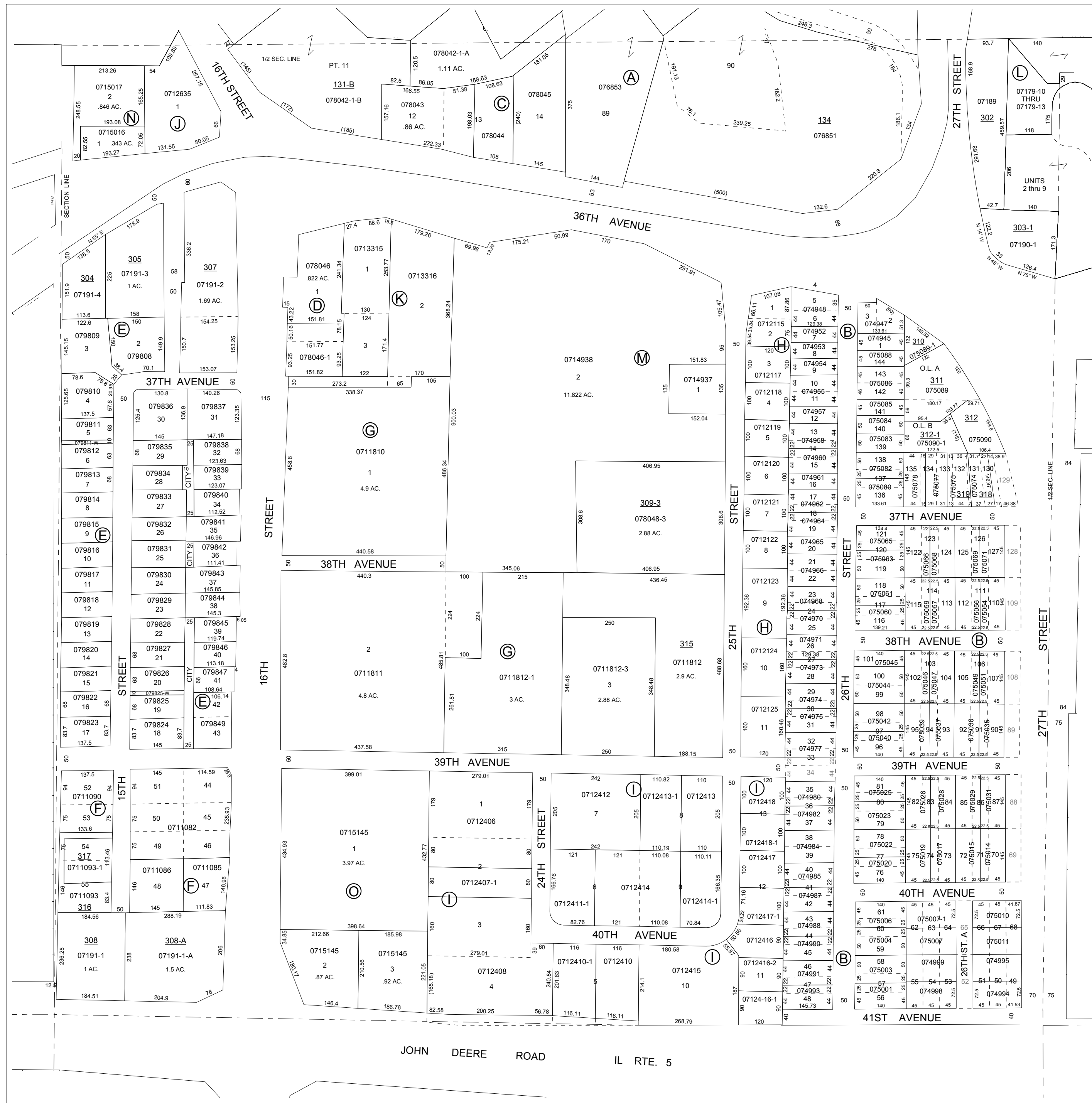


NOTE: STARTING IN 2002, PARCEL NUMBERS WILL NOT REFLECT THE TOWNSHIP ABBREVIATIONS, BUT THE 2-DIGIT TOWNSHIP NUMBER.



GIS DEPARTMENT  
ROCK ISLAND COUNTY,  
ILLINOIS

FOR SUBDIVISION  
INFORMATION  
SEE SHEET 22-S



SUPERVISORS' ASSESSMENT  
MAP OF  
S.W. 1/4 SECTION 9  
T.17N., R.1W. OF 4TH P.M.  
SOUTH MOLINE TOWNSHIP  
SUPPLEMENTAL FOR 2018  
17-09-300  
THIS IS NOT A LEGAL DOCUMENT