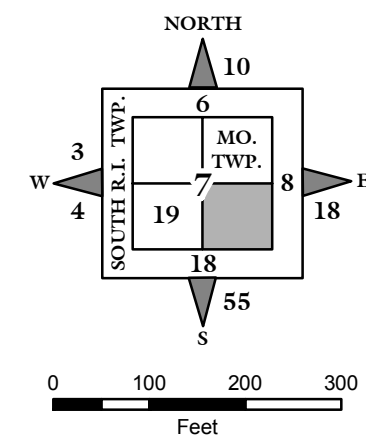
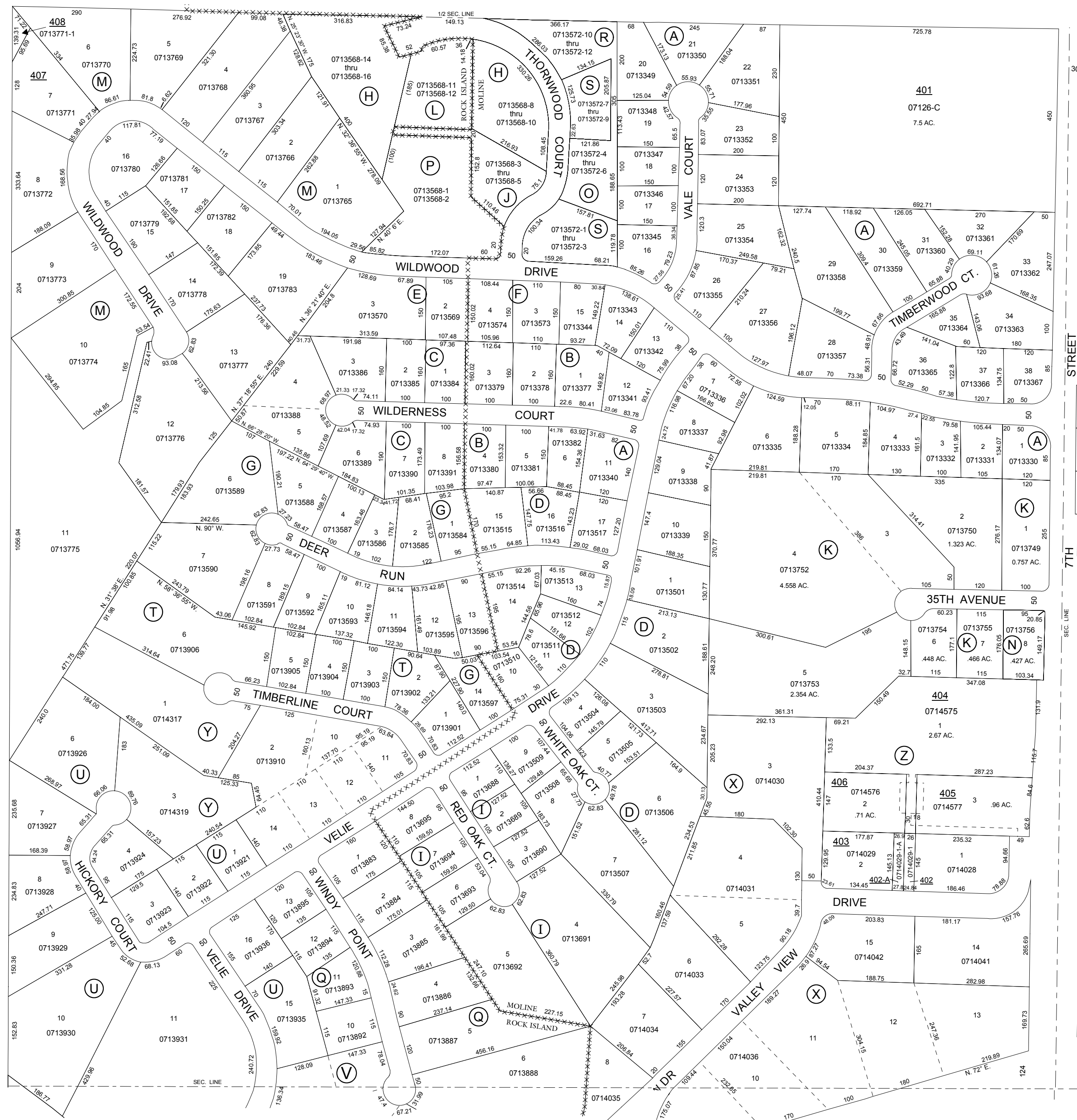


NOTE: STARTING IN 2002, PARCEL NUMBERS WILL NOT REFLECT THE TOWNSHIP ABBREVIATIONS, BUT THE 2-DIGIT TOWNSHIP NUMBER.



GIS DEPARTMENT  
ROCK ISLAND COUNTY,  
ILLINOIS

FOR SUBDIVISION  
INFORMATION  
SEE SHEET 17-S



SUPERVISORS' ASSESSMENT  
MAP OF  
S.E. 1/4 SECTION 7  
T. 17 N., R. 1 W. OF 4TH P.M.  
SOUTH MOLINE TOWNSHIP  
SUPPLEMENTAL FOR 2014  
17-07-400-  
THIS IS NOT A LEGAL DOCUMENT