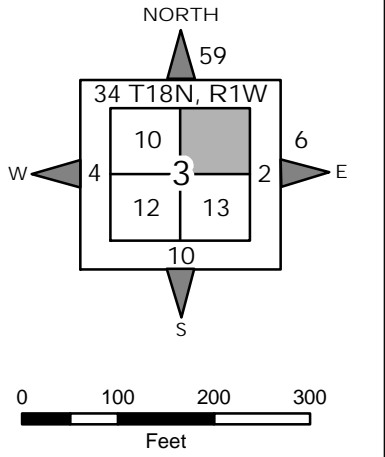
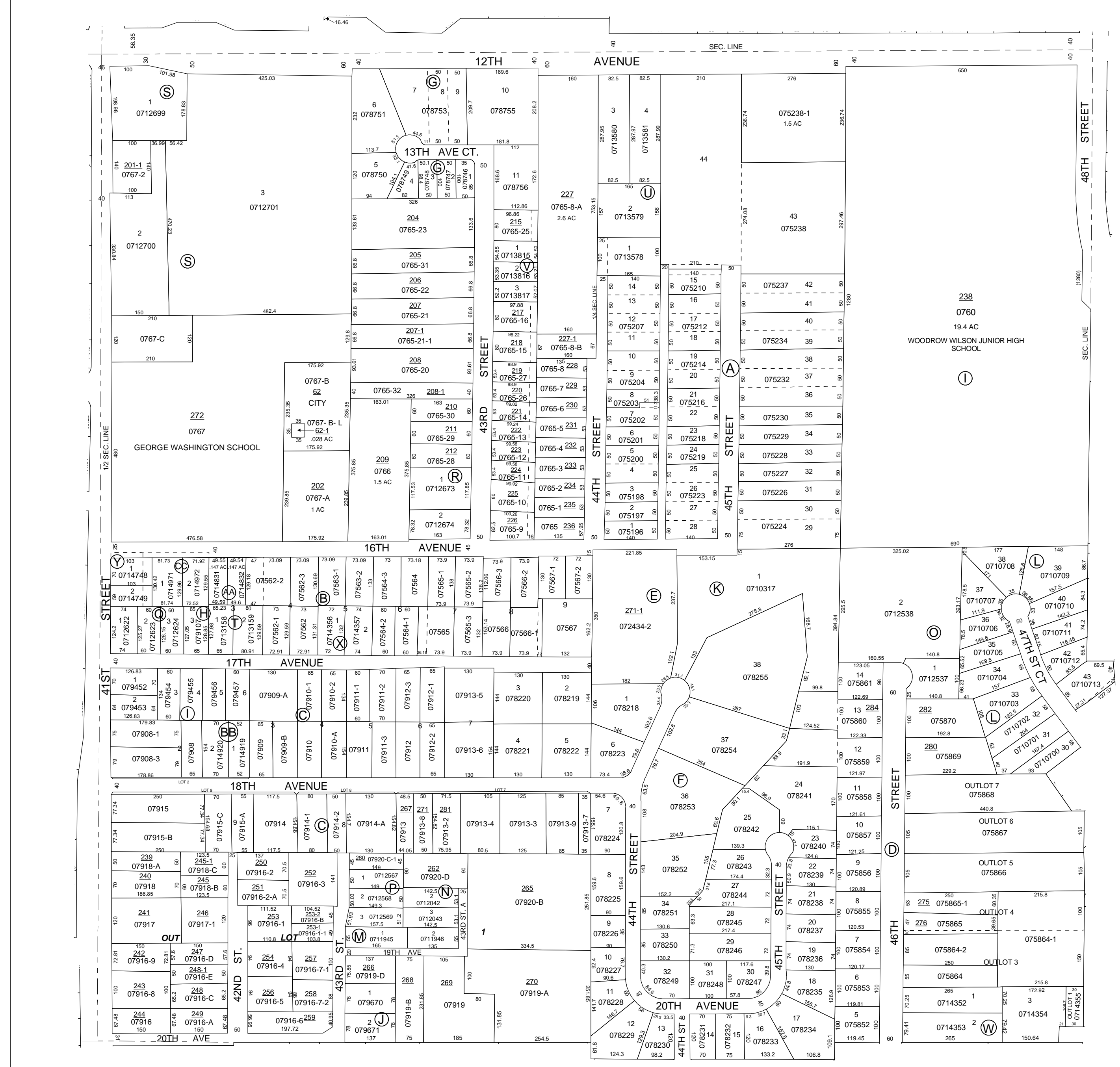


NOTE: STARTING IN 2002, PARCEL NUMBERS WILL NOT REFLECT THE TOWNSHIP ABBREVIATIONS, BUT THE 2-DIGIT TOWNSHIP NUMBER.



GIS DEPARTMENT
ROCK ISLAND COUNTY,
ILLINOIS

FOR SUBDIVISION
INFORMATION SEE
SHEET 11-S



SUPERVISORS' ASSESSMENT
MAP OF
N.E. 1/4 SECTION 3
T.17N., R.1W. OF 4TH P.M.
SOUTH MOLINE TOWNSHIP
SUPPLEMENTAL FOR 2006

17-03-
THIS IS NOT A LEGAL DOCUMENT