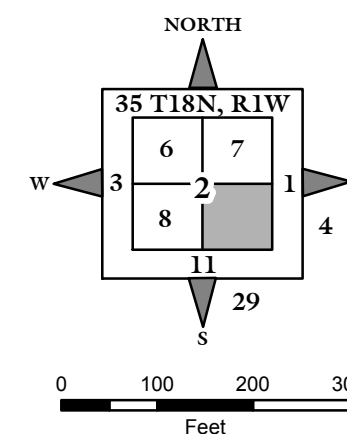
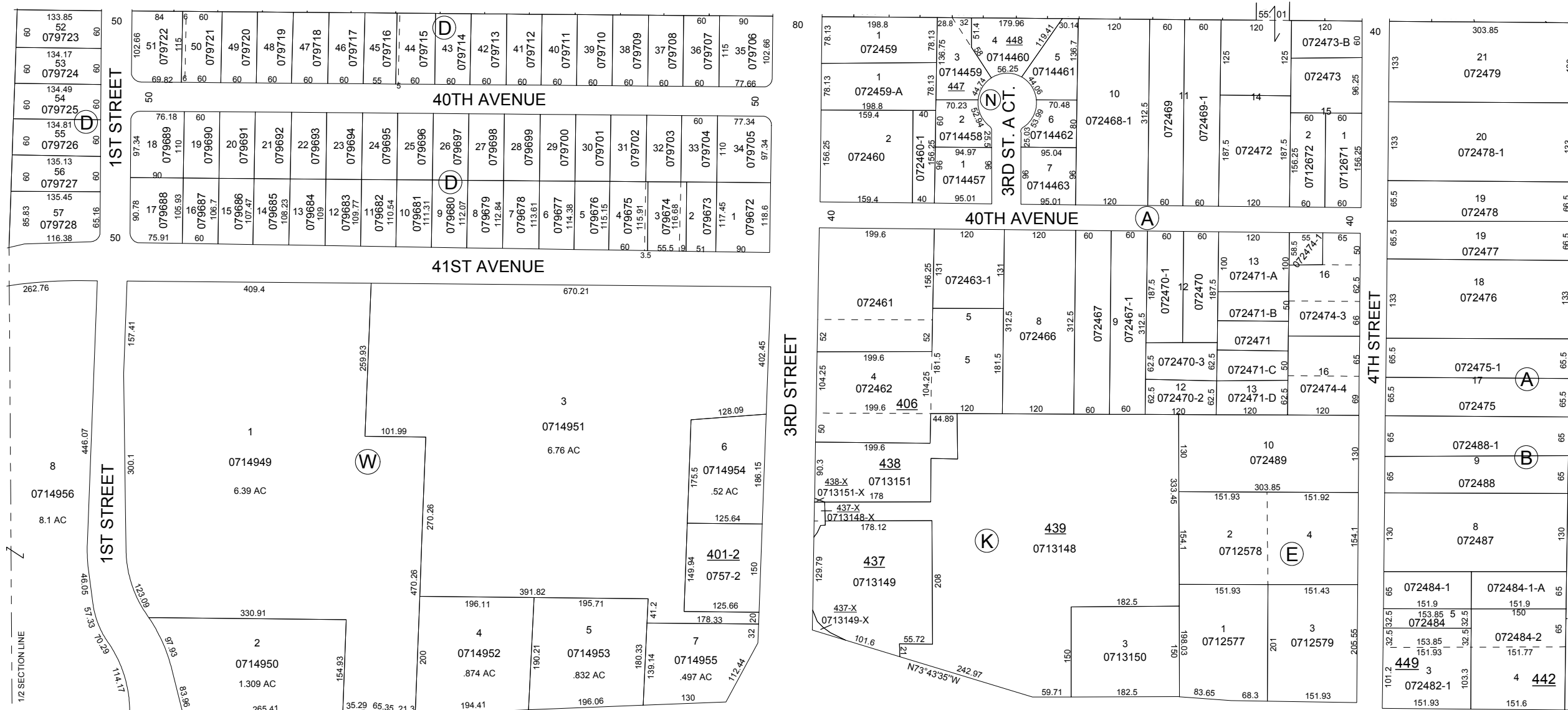


NOTE: STARTING IN 2002, PARCEL NUMBERS WILL NOT REFLECT THE TOWNSHIP ABBREVIATIONS, BUT THE 2-DIGIT TOWNSHIP NUMBER.

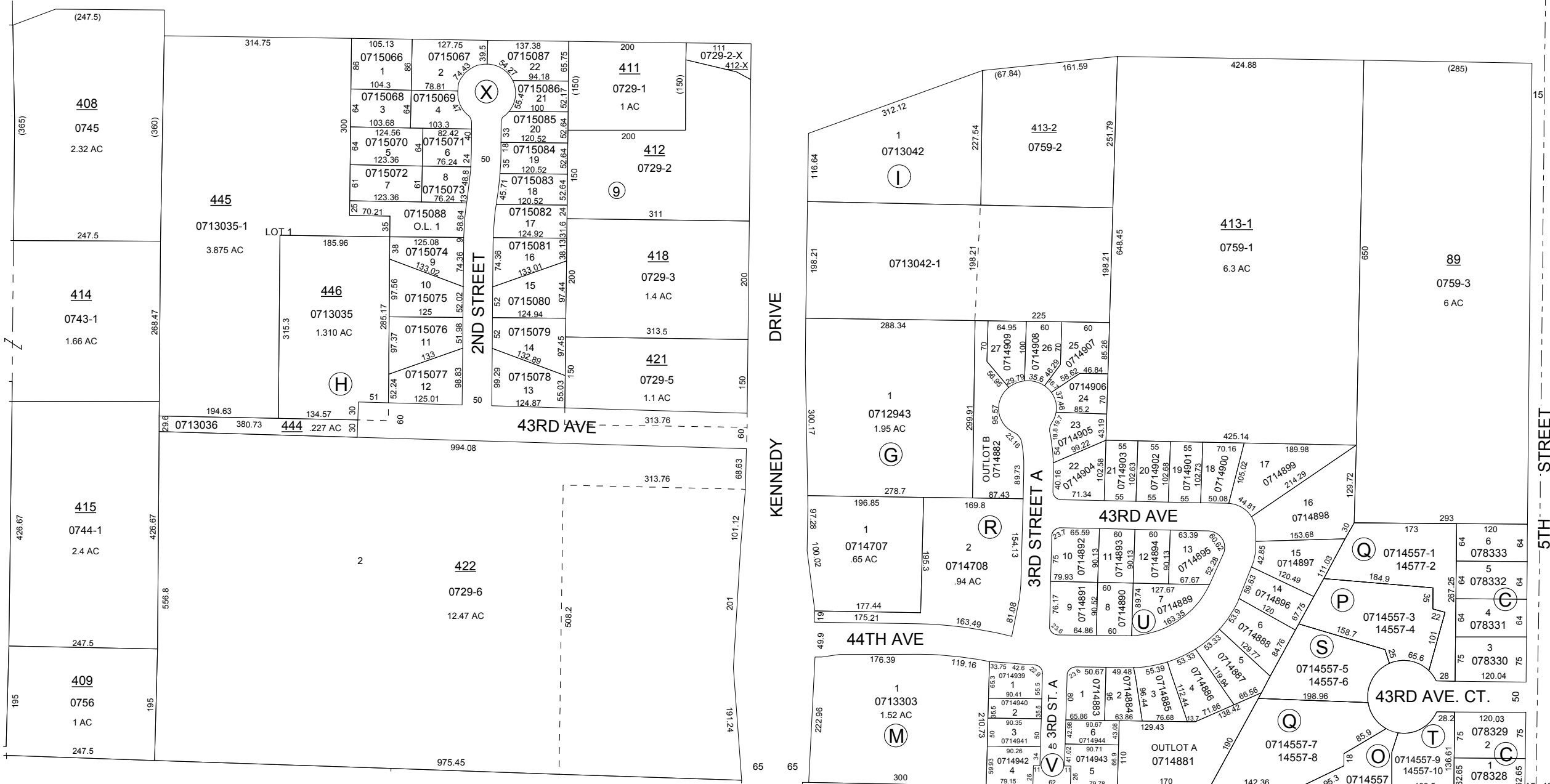


GIS DEPARTMENT
ROCK ISLAND COUNTY,
ILLINOIS

FOR SUBDIVISION
INFORMATION
SEE SHEET 9-S



AVENUE OF THE CITIES



SUPERVISORS' ASSESSMENT
MAP OF
S.E. 1/4 SECTION 2
T.17N., R.1W. OF 4TH P.M.
SOUTH MOLINE TOWNSHIP
SUPPLEMENTAL FOR 2018

17-02-400-
THIS IS NOT A LEGAL DOCUMENT