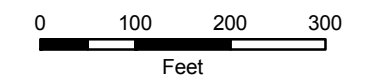
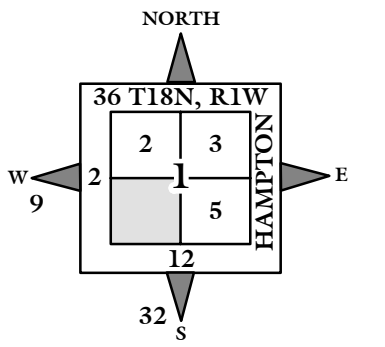
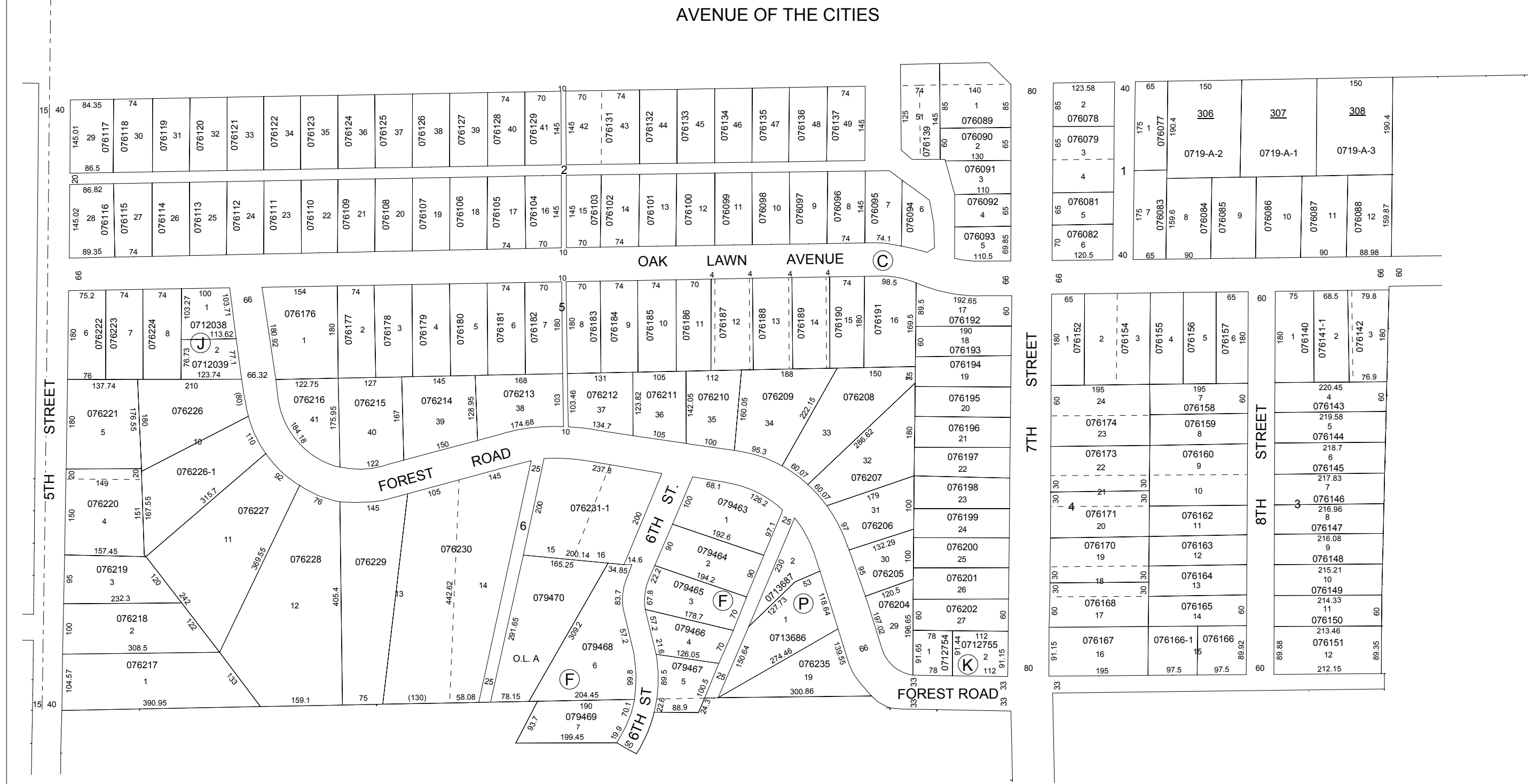


NOTE: STARTING IN 2002, PARCEL NUMBERS WILL NOT REFLECT THE TOWNSHIP ABBREVIATIONS, BUT THE 2-DIGIT TOWNSHIP NUMBER.



GIS DEPARTMENT
ROCK ISLAND COUNTY,
ILLINOIS

FOR SUBDIVISION
INFORMATION SEE
SHEET 4-S



SUPERVISORS' ASSESSMENT
MAP OF
S.W. 1/4 SECTION 1
T.17N., R.1W. OF 4TH P.M.
SOUTH MOLINE TOWNSHIP
SUPPLEMENTAL FOR 2012
17-01-300
THIS IS NOT A LEGAL DOCUMENT