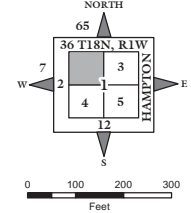
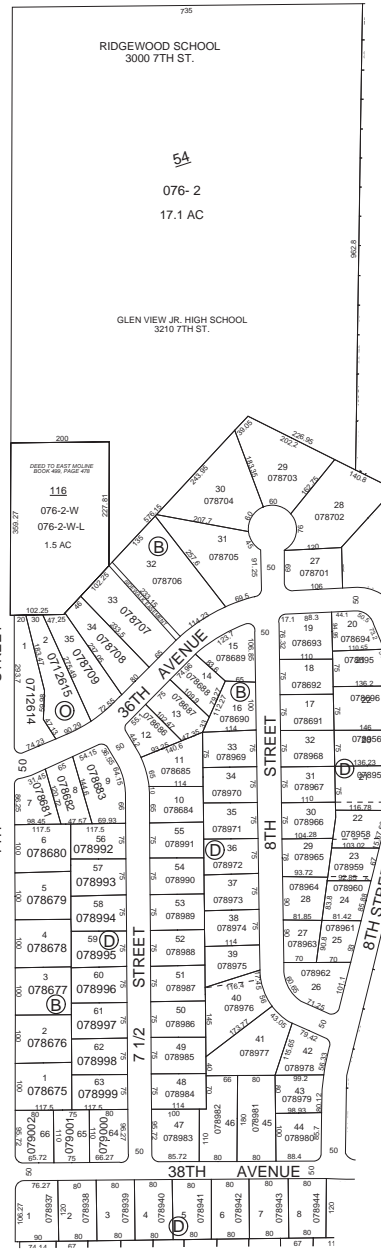
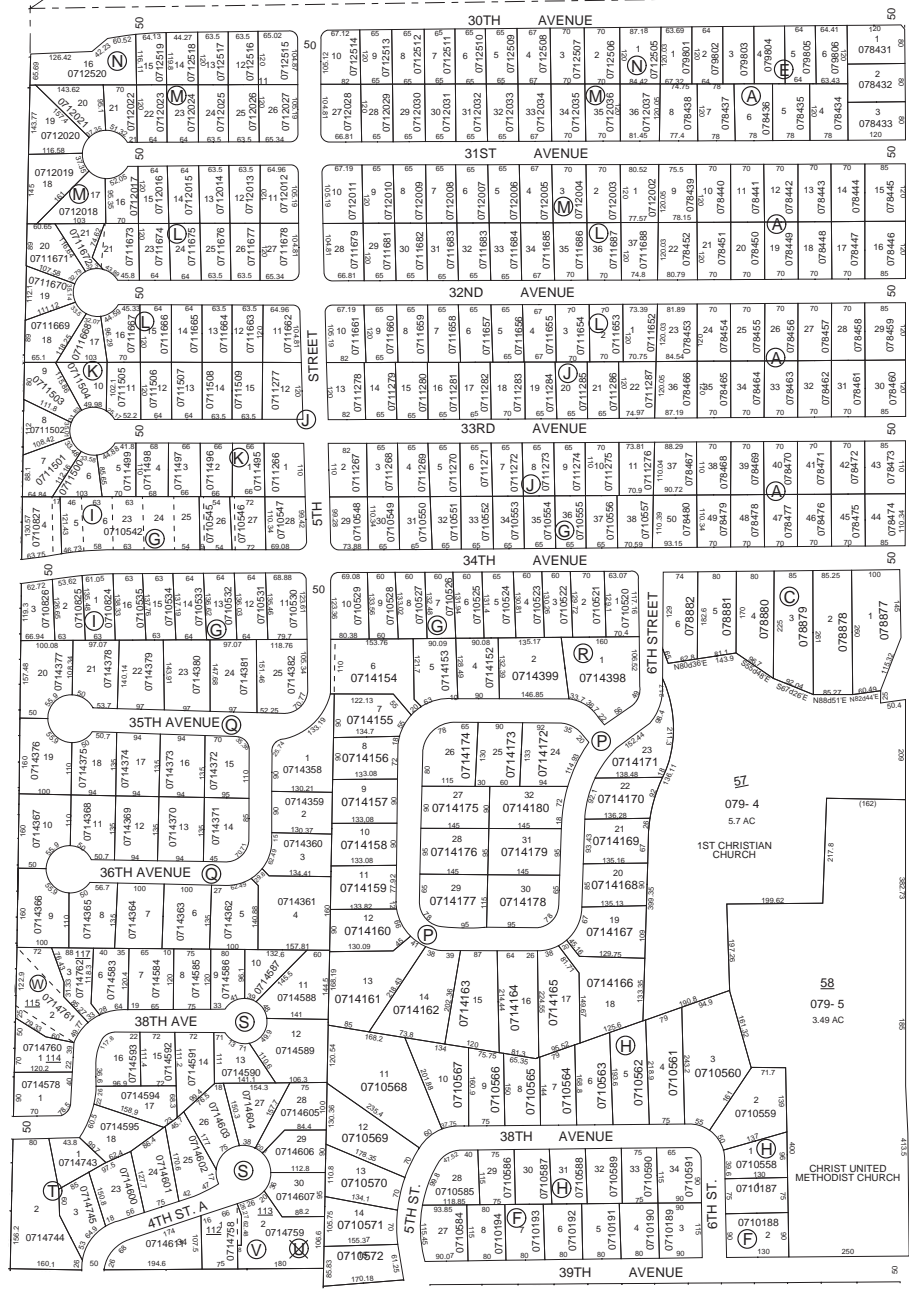


NOTE: STARTING IN 2002, PARCEL NUMBERS WILL NOT REFLECT THE TOWNSHIP ABBREVIATIONS, BUT THE 2-DIGIT TOWNSHIP NUMBER.



GIS DEPARTMENT  
ROCK ISLAND COUNTY,  
ILLINOIS

FOR SUBDIVISION  
INFORMATION  
SEE SHEET 2-S



SUPERVISORS' ASSESSMENT  
MAP OF  
N.W. 1/4 SECTION 1  
T.17N., R.11W. OF 4TH P.M.  
SOUTH MOLINE TOWNSHIP  
SUPPLEMENTAL FOR 2016  
17-01-100  
THIS IS NOT A LEGAL DOCUMENT